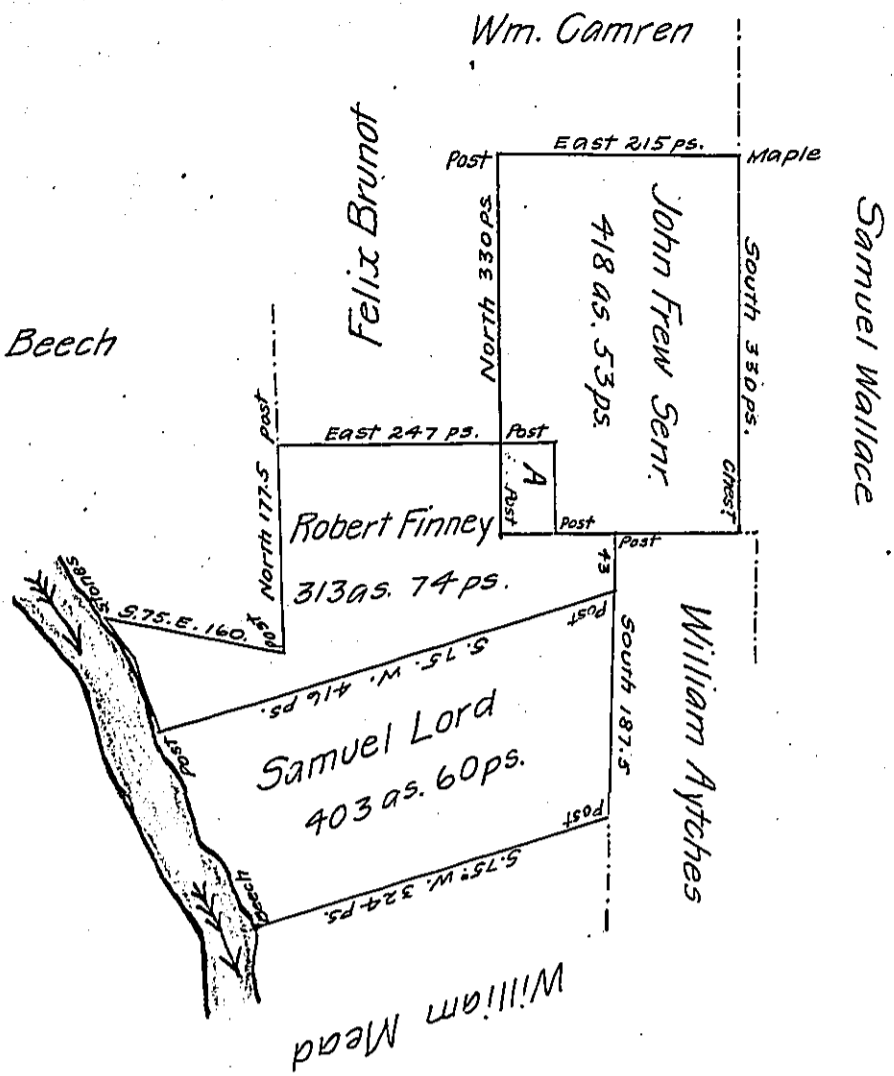


Courses and distances
up French Creek beg^d at a Beech

- N. 16° W. 16.8
- N. 56½° W. 16.4
- N. 30¼° W. 36.0
- N. 20° W. 19.4
- N. 67¾° W. 24.4
- N. 12° W. 38.0
- N. 16° W. 48.4 to a post

- N. 19° W. 64 ps.
- N. 34¼° W. 46 ps to stones



No certificate

IN TESTIMONY that the above is a copy of the original remaining on file in the Department of Internal Affairs of Pennsylvania, made conformably to an Act of Assembly approved the 16th day of February, 1833, I have hereunto set my Hand and caused the Seal of said Department to be affixed at Harrisburg, this second day of June 1906

Samuel D. Brown
Secretary of Internal Affairs.